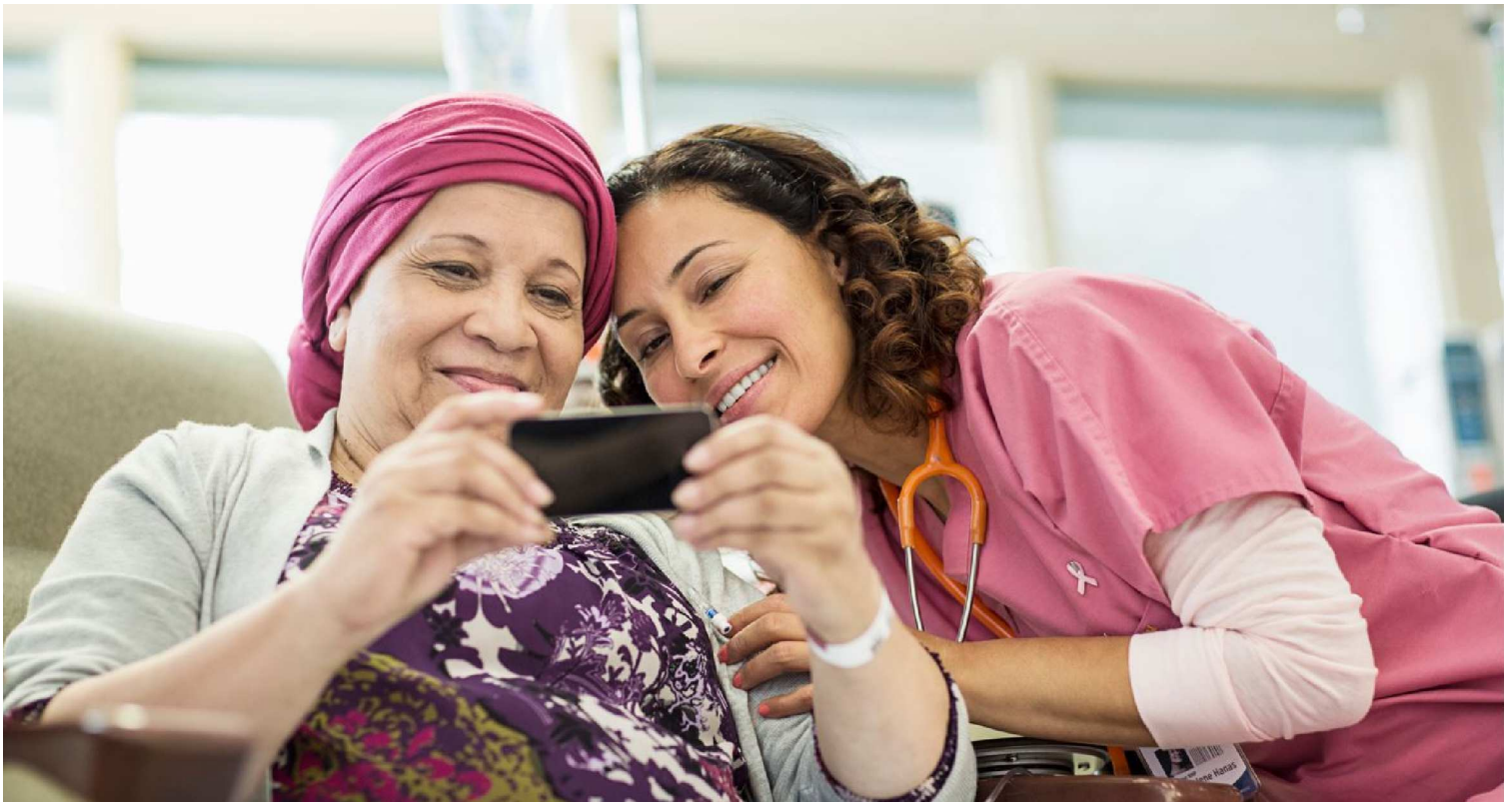


# Cancer

TRANSFORMING CARE FOR PATIENTS AND THE COMMUNITY



## Leading-Edge Cancer Care at Providence Santa Rosa Memorial

1 in 4 people are touched by cancer, but hope is rising thanks to the cutting-edge treatments and compassionate care found at Providence Santa Rosa Memorial Hospital and Oncology Centers. Our comprehensive oncology centers bring together a team of experts and the latest technology, clinical trials, and genetic testing, along with support and wellness resources to enhance health and well-being throughout the treatment journey. We strive on meeting each need and provide complete, whole-person care for body, mind, and spirit, close to home. This exceptional care is made possible due to the unwavering support of our donors who recognize local cancer care as a priority.

"From the moment we walked into the oncology center, we felt supported and understood. The entire team, from the reception staff to caregivers and doctors, demonstrated a level of compassion and professionalism that truly made a difference in our cancer journey. I always felt like Butch was in the best hands possible."

- Mary D.



Providence Santa Rosa Memorial Hospital Foundation

151 Sotoyome St. Santa Rosa, CA 95405 | GiveToMemorial.org

# Cancer

## Spectrum of Care

We are honored to support our community as the region's top provider of oncology services such as:

- **Screening and Genetic Testing:** We utilize state-of-the-art equipment and procedures to accurately screen for and diagnose cancer. Patients are thoughtfully guided through genetic risk evaluation, education/counseling and the latest in hereditary cancer genetic testing.
- **Breast Care:** Our Breast Center is designated as a Breast Imaging Center of Excellence by the American College of Radiology. From surgery to oncology and through breast reconstruction and recovery, our expert team of breast cancer specialists walk hand-in-hand with our patients on their breast cancer journey.
- **Medical and Radiation Oncology:** Our board-certified medical and radiation oncologists offer decades of experience in providing multidisciplinary care at various outpatient and inpatient locations. Our teams treat a spectrum of stages and types of cancer with expertise and compassion.
- **Clinical Trials and Research:** Clinical trials help determine the future of medicine, and Providence is dedicated to bringing that future into reality. We have conducted oncology clinical trials at Santa Rosa Memorial Hospital since 1983. Our research department is experienced in a wide assortment of oncology and hematology trials as well as other specialties. Over 900 patients have enrolled in clinical trials since 2000 and today we have over 80 open studies available to patients.
- **Support Services and Survivorship Programs:** We offer a variety of cancer wellness programs, available to all patients, including support groups and nutrition support through our Round Barn food pantry and partnership with Redwood Empire Food Bank. Our Cancer Survivorship Program serves patients before, during and after cancer treatment to assist with decision making, assistance with treating symptoms from cancer therapies, and coordination of care between oncology specialists and a patient's individual primary care physician.

## Vision

Our vision is to ensure that Northern California residents consistently receive the best patient experience and unparalleled cancer care at Providence Santa Rosa Memorial Hospital and Oncology Centers. By advancing innovation, ensuring the highest skills in our physicians and caregivers, supporting holistic care, partnering with families, and expanding access to the latest treatment options, we will be the beacon of hope for every person who comes to us for help, especially the economically insecure and vulnerable.



# Cancer



"Our cancer program would not be what it is today without the generous investment of our donors. Philanthropy is the reason we have our new linear accelerator, state-of-the-art 3D mammography, breast ultrasound, breast biopsy system and a food pantry. Everywhere you look you see the fingerprint of our donors, and I am deeply grateful that we have been able to make significant strides in the fight against cancer, bringing hope and healing to countless patients and their families.

- Elizabeth Tito, M.D.

# Cancer

## How you can support cancer care

Cancer, the great equalizer, requires steadfast investment to keep up the fight. Your gift to Santa Rosa Memorial Hospital Foundation helps stack the odds in our patients' favor. Your gift can be designated to oncology services overall or to a specific aspect that you are most passionate about:

- Support and continuing education for our oncology clinicians
- Upgrade our inpatient and outpatient cancer treatment spaces
- Enhance the technology used to support cancer screening and treatment
- Increase access to our innovative cancer treatment programs
- Invest in research and innovation in the field of cancer



**Wendy Langley**  
Philanthropy Officer

## Your generosity can be recognized in many ways:

- Create a named restricted fund or endowment
- Name a space or program
- Honor a clinician with an endowed chair
- Give in honor or in memory of a loved one
- Honor a favorite physician, therapist, or nurse

If you would like more information on how to support our oncology program, please contact Wendy Langley at 707-327-0481 or at [Wendy.Langley@providence.org](mailto:Wendy.Langley@providence.org).